

OTHERS

Pressure fine adjustment function

When the balance between the temperature and pressure deviates during sterilization, fine exhausting is carried out automatically in order to adjust the best chamber condition.

Lid interlock

A safety device (lid interlock mechanism) for locking the lid during operation is provided. A high level of safety is assured to prevent unanticipated accidents.

Water level detector

A safety device (water level detector) for preventing no-water-heating is provided. The device is designed to detect the water level through the micro electrolytes of the sterilizing water.

High altitude usage

Please contact our distributor when environmental condition is between 616 hPa - 860hPa.(equivalent altitude is approximately 1,000m to 4,000m) for custom-made instrument. Specifications are subject to change according to the altitude.

SPECIFICATIONS

| Model name | SX-300 / SX-300E | SX-500 / SX-500E | SX-700 / SX-700E |
|--|--|--|--|
| Operating temperature range | Sterilizing 105~135°C (0.019~0.212MPa) Heating 45~104°C (0~0.015MPa) Warming 45~95°C | | |
| Maximum operating pressure | 0.263MPa | | 0.25MPa |
| Temperature | Display Digital, Microprocessor controlled | | |
| Pressure gauge | Display Analog | | |
| | Display range 0~0.4MPa | | |
| Heat source | 1.5 kW electric heater | 2.0 kW electric heater | 3.0kW electric heater |
| Safety device | •No-water- heating prevention •Leakage breaker •Lid interlock •Over-heating prevention •Over-pressure prevention •Temperature sensor break detection •Safety valve | | |
| Protection type against electrical shock | Class I equipment | | |
| Time | Display Digital, Microprocessor controlled | | |
| | Display range | Sterilizing | |
| | | Heating | |
| | | Warming | |
| | 0:01~9:59, 10~99hours/1~99hours/1~999min. (Changable) | | |
| | 4hours (default setting) / 1~99hours (Changable) | | |
| Pressure chamber type | PED Category II (SX-300E/SX-500E/SX-700E) | | |
| Chamber dimensions | φ325×553mm | φ325×733mm | φ370×774mm |
| Chamber capacity | Effective internal volume: 36 L Internal volume: 44 L | Effective internal volume: 50 L Internal volume: 58 L | Effective internal volume: 69 L Internal volume: 79 L |
| Chamber material | SUS304 | | |
| Exhaust bottle material | Polyethylene | | |
| Dimensions (mm) | 410W,477D,790H (Protruding: 574 D) | 410W,477D,970H (Protruding: 574 D) | 470W,528D,1003H (Protruding: 625 D) |
| Weight | 50kg | 60kg | 72kg |
| Power consumption (caloric power) | 1.5kW (1290kcal/h) | 2.0kW (1720kcal/h) | 3.0kW (2580kcal/h) |
| Environmental conditions | When operating the autoclave, observe the environmental conditions given below. Ambient temperature: 10 to 35°C Relative humidity: 30 to 85% Atmospheric pressure: 860 to 1060hPa Maximum gradient: 2° | | |
| Accessories | Stainless basket (φ300×182 mm) - 1 Stainless baskets (φ300×182 mm) - 2 Stainless baskets (φ345×181mm) - 2 Caster stopper - 4, Slatted bottom plate - 1, Operator's manual - 1, Clear plastic accessory case - 1, Attachment screw for clear plastic accessory case - 1, Inspection sheet - 1, Warranty card - 1, Customer card - 1, | | |

| | SX-300 | SX-500 | SX-700 | SX-300E | SX-500E | SX-700E |
|-------------------------------|--|--|---|---|---|---|
| Related voltage / Power input | •120V/13A •230V/ 7A | •120V/17A •230V/ 9A | 230V/13A | 230V/7A | 230V/9A | 230V/13A |
| Required power supply | •Single-phase AC120V (50/60Hz) 15A or more •Single-phase AC230V (50/60Hz) 10A or more | •Single-phase AC120V (50/60Hz) 20A or more •Single-phase AC230V (50/60Hz) 15A or more | Single-phase AC230V (50/60Hz) 15A or more | Single-phase AC230V (50/60Hz) 10A or more | Single-phase AC230V (50/60Hz) 15A or more | Single-phase AC230V (50/60Hz) 15A or more |



●Please refer to the "EC Declaration of Conformity" for detailed standard application for SX-300E, SX-500E, SX-700E.

Sales Office

TOMY DIGITAL BIOLOGY CO., LTD.
3-14-17 Tagara, Nerima-ku, Tokyo 179-0073, Japan
e-mail : info@digital-biology.co.jp
URL : http://www.digital-biology.co.jp
phone : +81-3-5971-8160 fax : +81-3-3970-6036

Manufacturer:

TOMY KOGYO CO., LTD.
3-14-17 Tagara, Nerima-ku, Tokyo 179-0073, Japan

TOMY SEIKO CO., LTD.

All TOMY products have a limited one-year warranty. Specifications are subject to change according to product advancement. Tomy and Digital Biology is registered trademark of Tomy Seiko Co., Ltd. and Tomy Digital Biology Co., Ltd. Copyright 2002, Tomy Seiko and its subsidiaries. Printed in Japan.

5K0120 2A

SX

SX-300 / 500 / 700

SX-300E / 500E / 700E | C € 0035



TOMY

HIGH PRESSURE STEAM STERILIZER

WORK MONITOR

Auto-variable exhaust speed

Equipped automatically open exhaust valve after completed sterilizing. (set to variable for liquid sterilization.)

Easily viewable "work monitor"

The LED display shows working status for easy monitoring. The process being performed is indicated by an LED indication lamp blinking in red.

Cooling fan

The rapid air-cooling function (vessel-cooling fan) permitting reduction of the chamber cool down time is provided as a standard feature. This is most appropriate for lowering the temperature rapidly on completion of the cycle. The time required for lower the temperature is much reduced by employment of the cooling fan in comparison with natural cooling.

OPTION

External sensor for articles

Sensor for directly detecting the temperature of articles to be sterilized. More reliable sterilization monitor can be carried out.

Timer function

The operation starting time can be preset.

3 icon lamps



Each icon shows necessary condition to start operation. They prevent wrong operation.

Large indication lamp "Operated"



An easily viewable large indication "Operated" is at the operating panel. Depending on the pressure status (normal pressure/pressure is applied), the displayed color changes.



| Liquid sterilizing course | Sterilizing course | Sterilizing-warming course | Heating-warming course | Memory recall |
|--|--|--|--|---|
| <p>Ready Completion</p> <p>Most appropriate course for prevention of sudden sample boiling</p> | <p>Ready Completion</p> <p>Normal sterilization course</p> | <p>Ready Completion</p> <p>Prevents culture media from coagulating after sterilization</p> | <p>Ready Completion</p> <p>Extremely convenient for dissolving culture media and warming</p> | <p>Ready Completion</p> <p>Preferred operating conditions can be recalled up easily</p> |

ACCESSORIES

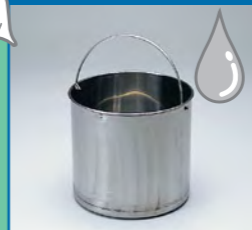
Stainless Basket Glassware



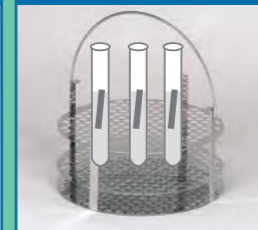
Stainless Long Basket Waste



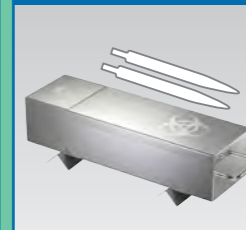
Stainless Bucket Liquid



Stand for Testing Durham's Tubes



Sterilizing Container Disposable Pipets

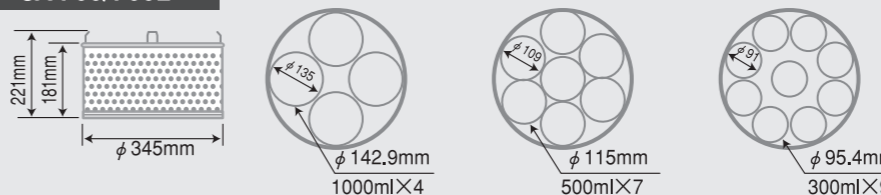


Capacity of basket for flask

SX-300/300E/500/500E



SX-700/700E



OPTION

"Document management purpose (e.g.:GMP,GLP)"

① Data output

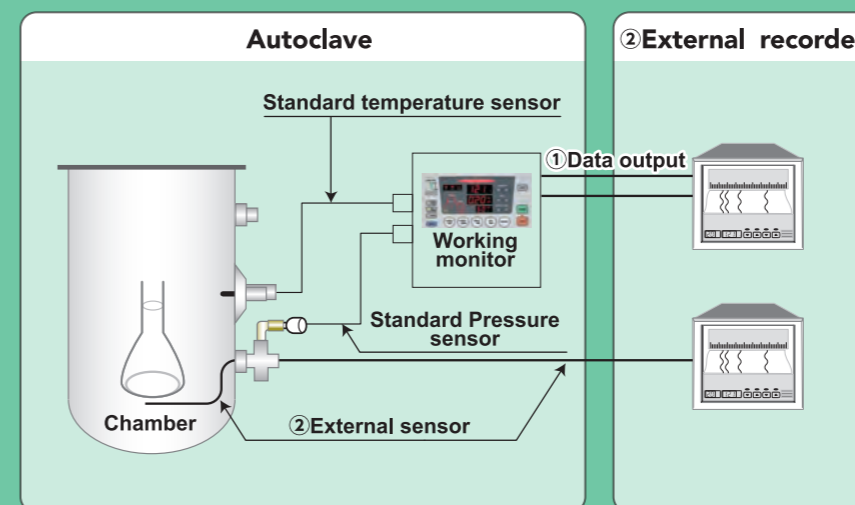
The temperature data, the pressure data, etc. can be exported. These data can be recorded when the external recorder is connected.

② External sensor and recorder

The temperature sensor and the recorder are independent from the autoclaves. The chamber temperature can be recorded.

③ Printer for recorder

Time / Chamber temperature / Chamber pressure / External temperature if the external sensor is equipped / Autoclave model name / Autoclave serial number / Data / Lot number / can be recorded



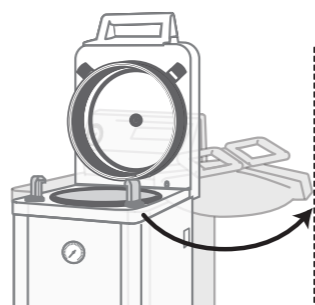
Easy and smooth operation

The lid can be operated easily and smoothly with a single hand and foot. The lid lock is released by stepping on the foot pedal while pressing the lid down. The lid can be closed easily just by pressing it down. A basket can be held in one during opening or closing lid.



Saving installation space

The main body is very compact its own design. Installation space at the side of the main body is not required because of the top-open lid. SX autoclaves can be installed side-by-side.



★ The illuminated display on the operating panel shown in the picture is different from the actual display at the time of operation.